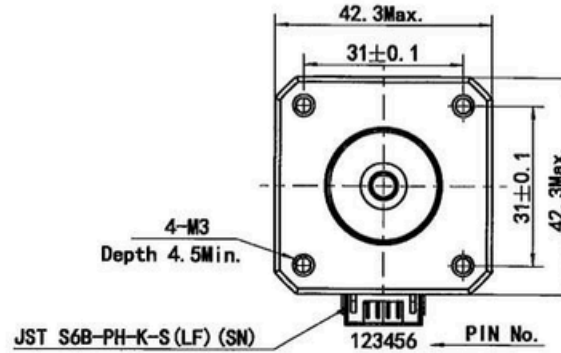
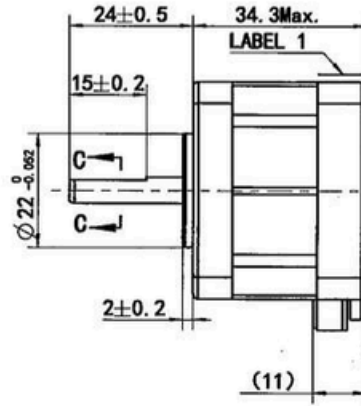
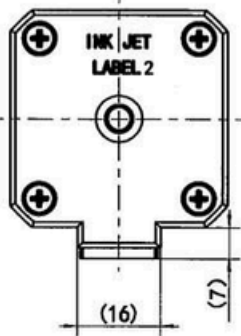
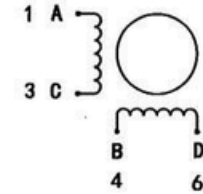


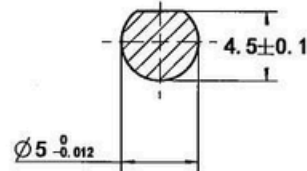
MS17HD4P4100



Wiring Diagram



C-C (3:1)



Exciting Sequence vs. Direction of Rotation

STEP	A	B	C	D	CCW
1	+	+	-	-	↑
2	-	+	+	-	
3	-	-	+	+	
4	+	-	-	+	

Clockwise view from mounting side

Specification

1. Number of Phase	2
2. Step Angle	1.8°
3. Rated Voltage	4.2 V DC
4. Rated Current	1 Amp
5. Holding Torque	0.33 Nm Typ. (Two phase on/rated current) ⚠
6. Phase Resistance	4.2 ohm±10% (20°C) ⚠
7. Phase Inductance	7.5 mH±20% (1kHz 1V rms) ⚠
8. Rotor Inertia	38 gcm ²
9. Motor Weight	0.21 kg
10. Insulation Class	B (130°C)

Label 1 Detail

STEPPING MOTOR
 Insulation: Class B, 60VDC Max.
 1Amp Holding: 0.33Nm
 3000RPM Max. **PIVEXIN** US
 UL FILE No. E465363 XXX

Factory ID

Label2 Detail

TYPE MS17HD4P4100 ⚠
 XXXXXXXX YY/MM/DD ⚠
 Work Order Date Format

Unit:mm

First angle method



Tolerances for linear and angular dimensions without individual tolerance indications GB/T 1804-m eqv ISO 2768-1:m

Geometrical tolerance for features without individual tolerance indications GB/T 1184-K eqv ISO 2768-2:K

UNLESS OTHERWISE SPECIFIED

Approve

Standardize

Process Review

Check

Design

NAMES

SIGNATURE

DATE

Drawing No: 4611110008896

Rev. C1

SCALE: 1:1

Sheet 1 of 1

PIVEXIN TECHNOLOGY

REV.	REVISION RECORD	DATE
C1	ECR:23-317	2023.03.27
C0	Update nameplate ⚠	2017.04.24
B0	310mNm Min, 7.6mH, change the nameplate ⚠	2013.01.24
A0	Original revision	2011.07.18